

# FLAUTO 2



**FLAUTO 2**  
height 1762 mm, lenght 606 mm. Claret finish (cod. 06).



**Technical features:**

- steel towel warmer radiator
- horizontal elements featuring round tubes 18 mm diameter
- side manifolds with a 30 mm round section
- manifold threading 1/2" Gas right
- maximum working pressure 8 bar
- maximum working temperature 95°C

**Price included:**

- 2 pair of CHELA wall brackets
- 1/2" air vent

**Special options and surcharges:**

Radiators can be supplied with no. 1 1/2" coupling welded laterally for the connection to a single-pipe system and no. 2 1/2" couplings welded laterally to a manifold (Cod. B10).

Surcharge for two 1/2" couplings welded to a lateral manifold and an internal diaphragm (**Cod. B10**)

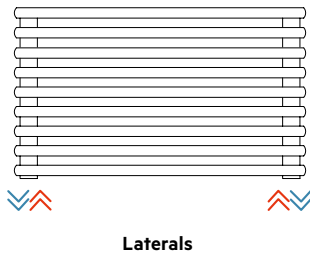
**CAUTION:** when this latter special working is present, correct operation is possible only when the lower outlet coupling is in axial alignment with the lowest pipe. Whenever this coupling is higher, all the pipes below will remain cold because they are not involved in the flow of water.

Prearrangement for monotube valve (**Cod. B14**)

Finishes available	Surcharge
Standard White	
Classic finished	
Special finished	
Other RAL colors	

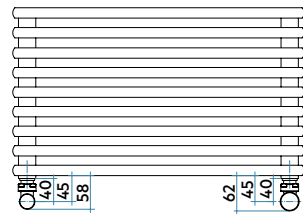
Finishing codes see page 596.

**Connections**

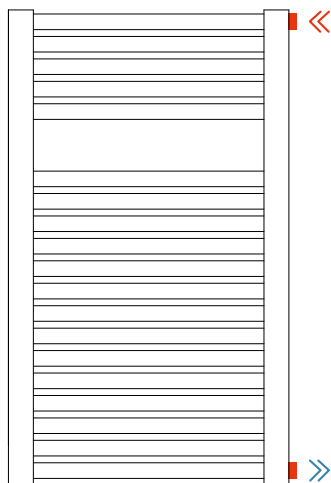


For other types of connections see pag. 414

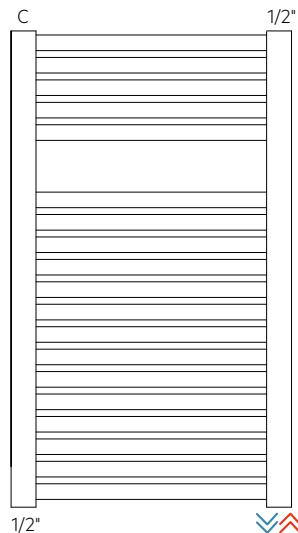
**Connection dimensions with IRSAP valves**

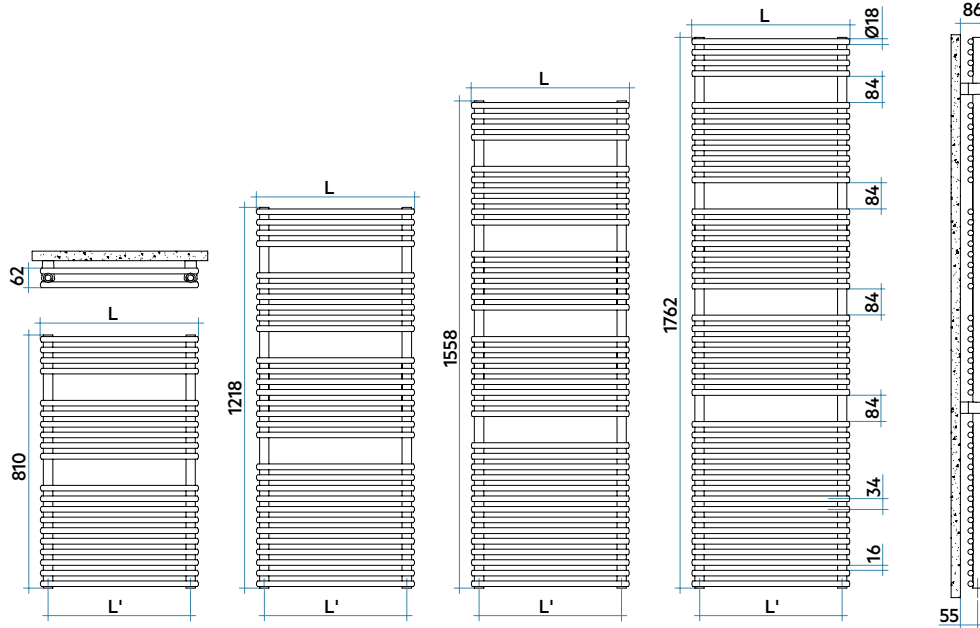


**cod. B10**



**cod. B14**





Model	Code	Depth	Height	Width	Conn.			Thermal Power				Exp.	Mix. Funct.		
					centre	Weight	Cap.	Δt=50°C	Δt=40°C	Δt=30°C	Δt=20°C				
		mm	mm	mm	mm	Kg	lt	Btu/h	Watt	Watt	Watt (*)	Watt	n.	Watt	Code
810 40 rails 2 espaces	FDP045 B 01 IR 01 NNN	62	810	456	406	9,8	4,5	1975	579	444	315	194	1,192	400	ANRES400WDI
	FDP050 B 01 IR 01 NNN	62	810	506	456	10,7	4,9	2192	642	492	349	215	1,196	400	ANRES400WDI
	FDP055 B 01 IR 01 NNN	62	810	556	506	11,6	5,3	2408	706	540	382	235	1,199	700	ANRES700WDI
	FDP060 B 01 IR 01 NNN	62	810	606	556	12,5	5,7	2625	769	588	416	256	1,203	700	ANRES700WDI
	FDP075 B 01 IR 01 NNN	62	810	756	706	15,3	6,9	3275	960	732	516	316	1,214	1000	ANRES1000WDI
1218 60 rails 3 espaces	FDM045 B 01 IR 01 NNN	62	1218	456	406	14,7	6,8	2796	820	624	439	268	1,221	700	ANRES700WDI
	FDM050 B 01 IR 01 NNN	62	1218	506	456	16,0	7,4	3107	911	694	488	298	1,221	700	ANRES700WDI
	FDM055 B 01 IR 01 NNN	62	1218	556	506	17,4	8,0	3418	1002	763	537	328	1,220	1000	ANRES1000WDI
	FDM060 B 01 IR 01 NNN	62	1218	606	556	18,8	8,6	3730	1093	833	586	358	1,220	1000	ANRES1000WDI
	FDM075 B 01 IR 01 NNN	62	1218	756	706	22,9	10,3	4664	1367	1041	733	447	1,219	1000	ANRES1000WDI
1558 76 rails 4 espaces	FDL045 B 01 IR 01 NNN	62	1558	456	406	18,6	8,7	3606	1057	803	563	342	1,232	1000	ANRES1000WDI
	FDL050 B 01 IR 01 NNN	62	1558	506	456	20,3	9,4	3985	1168	889	625	381	1,223	1000	ANRES1000WDI
	FDL055 B 01 IR 01 NNN	62	1558	556	506	22,1	10,1	4364	1279	975	688	420	1,215	1000	ANRES1000WDI
	FDL060 B 01 IR 01 NNN	62	1558	606	556	23,8	10,9	4743	1390	1062	751	460	1,206	1000	ANRES1000WDI
	FDL075 B 01 IR 01 NNN	62	1558	756	706	29,0	13,1	5879	1723	1324	942	584	1,181	1000	ANRES1000WDI
1762 88 rails 4 espaces	FDG045 B 01 IR 01 NNN	62	1762	456	406	21,4	10,0	4107	1204	912	638	386	1,242	1000	ANRES1000WDI
	FDG050 B 01 IR 01 NNN	62	1762	506	456	23,4	10,8	4584	1343	1021	717	435	1,230	1000	ANRES1000WDI
	FDG055 B 01 IR 01 NNN	62	1762	556	506	25,5	11,7	5061	1483	1130	796	486	1,219	1000	ANRES1000WDI
	FDG060 B 01 IR 01 NNN	62	1762	606	556	27,5	12,6	5537	1623	1240	876	537	1,207	1000	ANRES1000WDI
	FDG075 B 01 IR 01 NNN	62	1762	756	706	33,5	15,1	6968	2042	1572	1122	697	1,173	1000	ANRES1000WDI

Electric heater for Dual Power

BATHROOMS RADIATORS

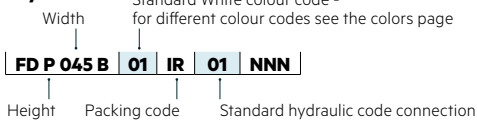
(\*) Thanks to the high performance of Irsap FLAUTO 2 radiators, the ideal Δt for low temperature projects is Δt at 30°C.

For Δt different from 50°C use the formula:  $Q=Q_n (\Delta t / 50)^n$

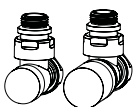
To order a radiator in the mixed version put the code of the Standard version + the code of the corresponding electric heater

Example: Mod. 1762 x 556: **FDG055 B 01 IR 01 NNN** (€ 608,74) + **ANRES1000WDI** (€ 197,29) = Tot. € 806,03

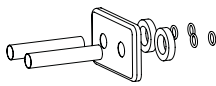
### Key Codes



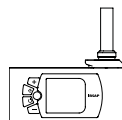
### Decorative & Technical Accessories



Kit Valves and Lockshield valve  
Pag. 562



Pipe cover kit  
Pag. 566



Electronic Control  
Pag. 574

