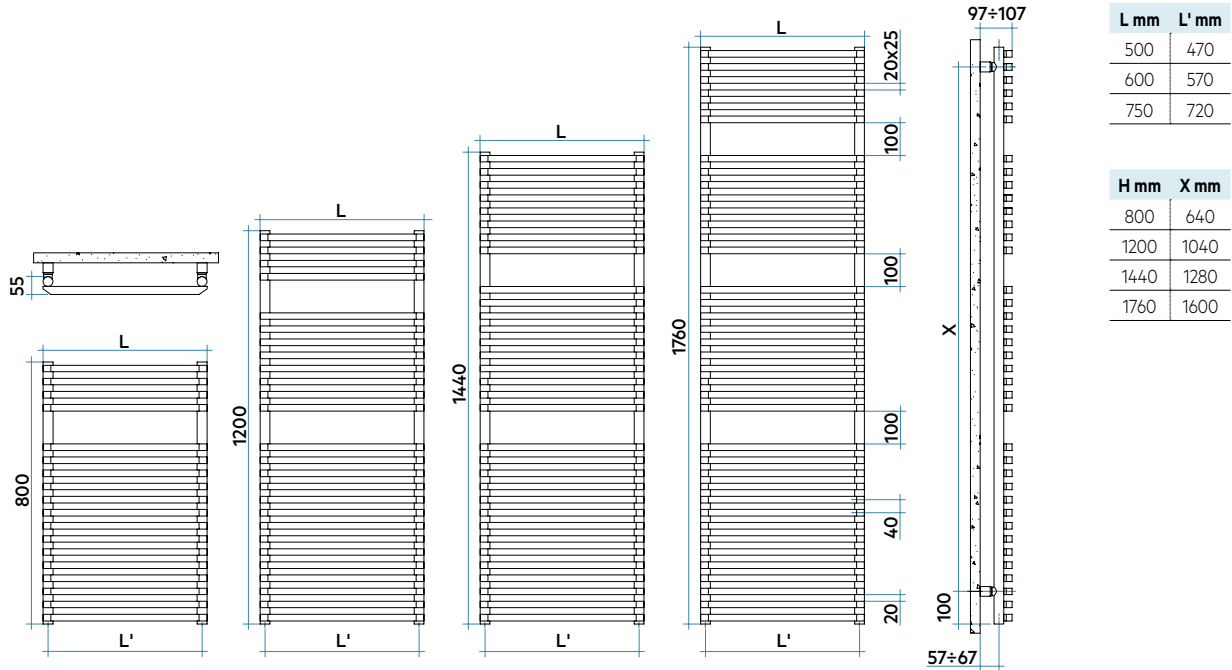




NET

height 1760 mm, length 500 mm. Edelweiss White finish (cod. 34).
Designed by Synthesis Design



Model	Code	Depth mm	Height mm	Conn.		Weight Kg	Cap. lt	Btu/h	Thermal Power				Exp. n.	Mix. Funct. Watt	Code
				Width mm	centre mm				Δt=50°C Watt	Δt=40°C Watt	Δt=30°C Watt (*)	Δt=20°C Watt			
800 18 rails 1 espace	NTS050 B 01 IR 01 NNN	55	800	500	470	7,7	4,6	1525	447	340	239	145	1,230	400	ANRES400WDI
	NTS060 B 01 IR 01 NNN	55	800	600	570	9,0	5,3	1836	538	412	293	180	1,192	400	ANRES400WDI
	NTS075 B 01 IR 01 NNN	55	800	750	720	10,9	6,4	2300	674	518	370	229	1,176	700	ANRES700WDI
1200 26 rails 2 espaces	NTM050 B 01 IR 01 NNN	55	1200	500	470	11,2	6,7	2252	660	504	355	218	1,211	700	ANRES700WDI
	NTM060 B 01 IR 01 NNN	55	1200	600	570	13,0	7,8	2682	786	602	426	263	1,197	700	ANRES700WDI
	NTM075 B 01 IR 01 NNN	55	1200	750	720	15,8	9,3	3327	975	750	535	332	1,175	1000	ANRES1000WDI
1440 32 rails 2 espaces	NTL050 B 01 IR 01 NNN	55	1440	500	470	13,7	8,2	2672	783	597	421	257	1,216	700	ANRES700WDI
	NTL060 B 01 IR 01 NNN	55	1440	600	570	15,9	9,5	3173	930	712	504	310	1,200	1000	ANRES1000WDI
	NTL075 B 01 IR 01 NNN	55	1440	750	720	19,3	11,4	3924	1150	885	631	392	1,175	1000	ANRES1000WDI
1760 38 rails 3 espaces	NTE050 B 01 IR 01 NNN	55	1760	500	470	16,4	9,8	3214	942	718	507	310	1,214	1000	ANRES1000WDI
	NTE060 B 01 IR 01 NNN	55	1760	600	570	19,0	11,3	3808	1116	854	605	372	1,198	1000	ANRES1000WDI
	NTE075 B 01 IR 01 NNN	55	1760	750	720	23,0	13,7	4698	1377	1060	756	470	1,174	1000	ANRES1000WDI

Electric heater for Dual Power

BATHROOMS RADIATORS

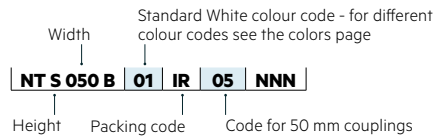
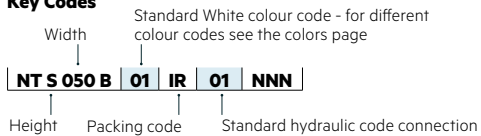
(*) Thanks to the high performance of Irsap NET radiators, the ideal Δt for low temperature projects is Δt at 30°C.

For Δt different from 50°C use the formula: $Q=Q_n (\Delta t / 50)^n$

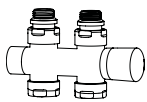
To order a radiator in the mixed version put the code of the Standard version + the code of the corresponding electric heater

Example: Mod. 1440 x 750: **NTL075 B 01 IR 01 NNN** (€ 293,29) + **ANRES1000WDI** (€ 197,29) = Tot. € 490,58

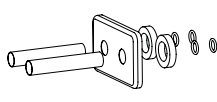
Key Codes



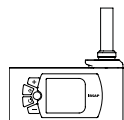
Decorative & Technical Accessories



Kit Valves and Lockshield valve
Pag. 562



Pipe cover kit
Pag. 566



Electronic Control
Pag. 574

